



## (Fever) visions for a Topic Mapped library

Topic Maps 2008 – 3. april

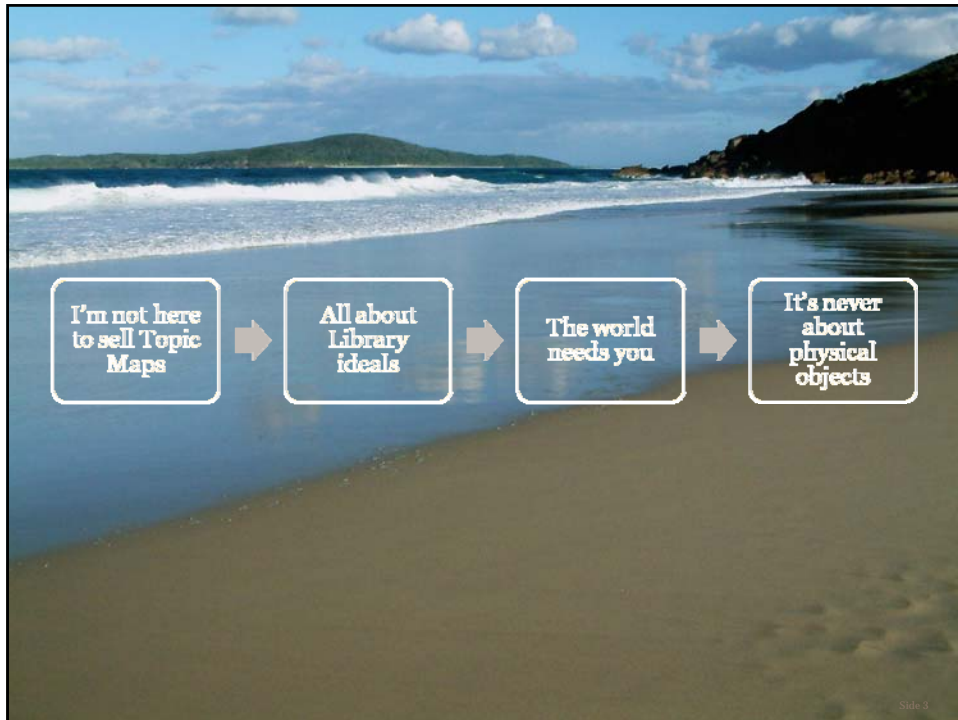
Alexander Johannesen

BEKK



### Alexander Johannesen

- Previously at the **National Library of Australia**
  - Web technology manager; Information Architecture, UX, Topic Maps, meta data, standards, semantic web, huge repositories, library ideals
- Now **Bekk Consulting**, Norway
- Open-source TM tools, articles, blog, Teaches on Topic Maps and Information Architecture (Aus / Nor), Technical editor of SemWeb book
- Talk a lot, shoots from the hip, opinionated but willing to change



## Library ideals

- We are to ensure that a **significant record** of our country and our countrymen is collected and safeguarded
- We shall meet the **needs of our users** for rapid and easy access to our **collections and other resources**
- We shall demonstrate our **prominence** in our nation's cultural, intellectual and social life and to foster an **understanding and enjoyment** of the **library and its collections**
- We are to ensure that our nation's **people have access** to vibrant and **relevant** information services
- We are to ensure **our relevance** in a rapidly changing world, **participate** in new online communities and **enhance our visibility**

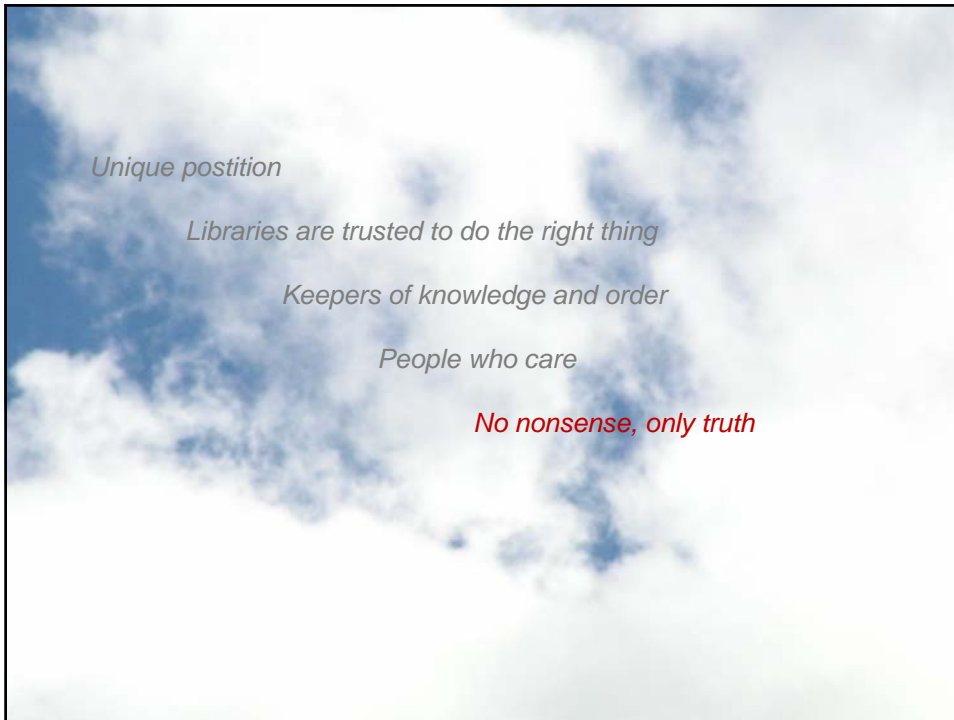


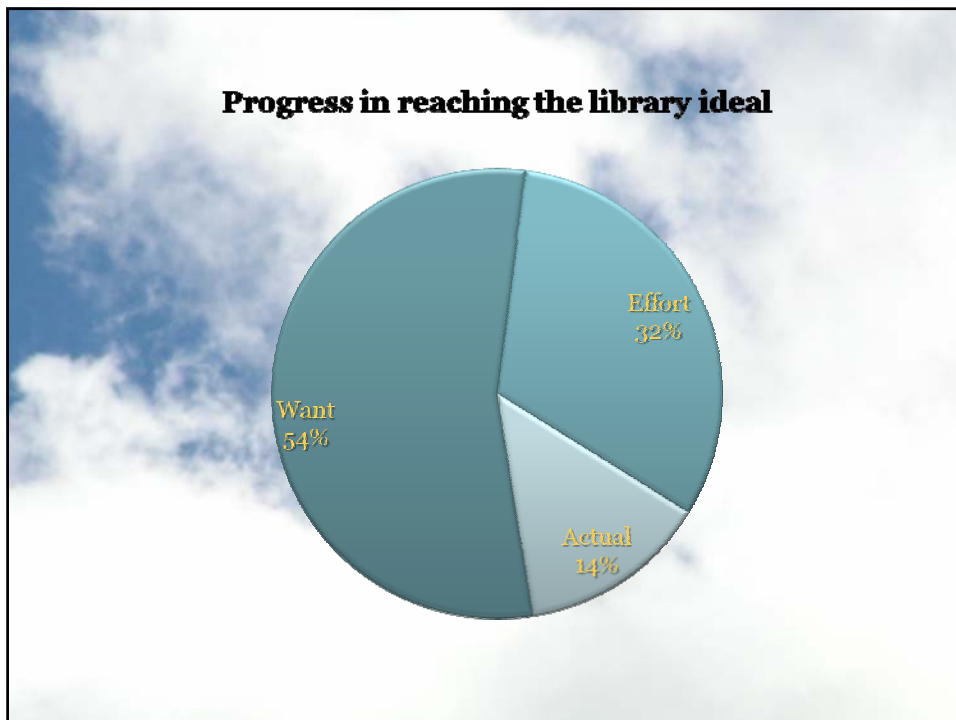
Stating the bleeding obvious ...

**Trust**  
and why only the library  
can save us all









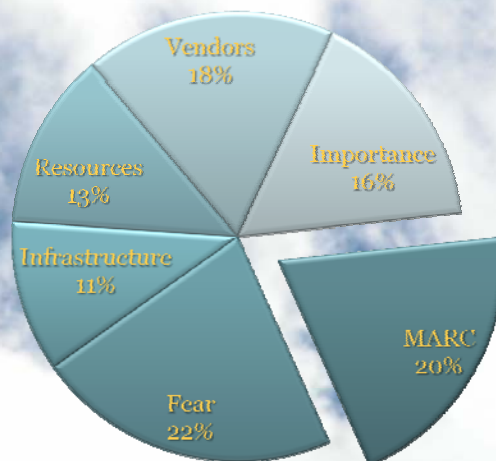


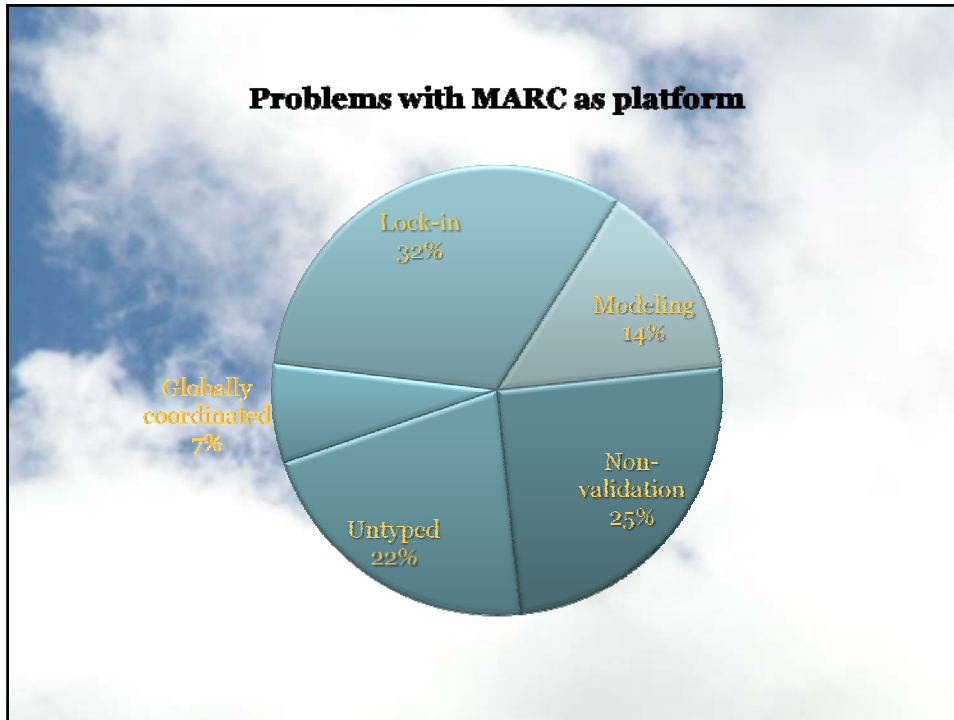


## Problems

with Technology, culture, goals

## Problems



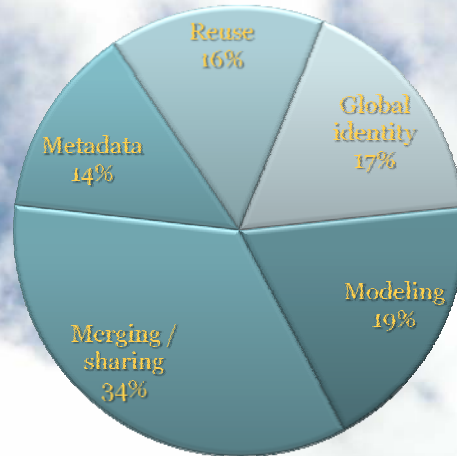


## Resignation

---

- August 2007
- Response
  - Tremendous amount of (hidden) support
  - I am not alone; even people who do the wrong things would like to do otherwise
  - Friendships around the world
  - Librarians who needs help

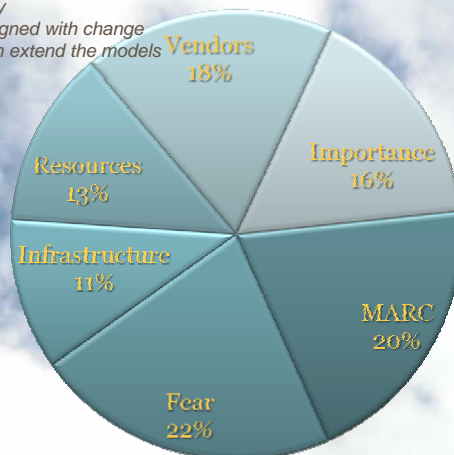
## Topic Maps specialities

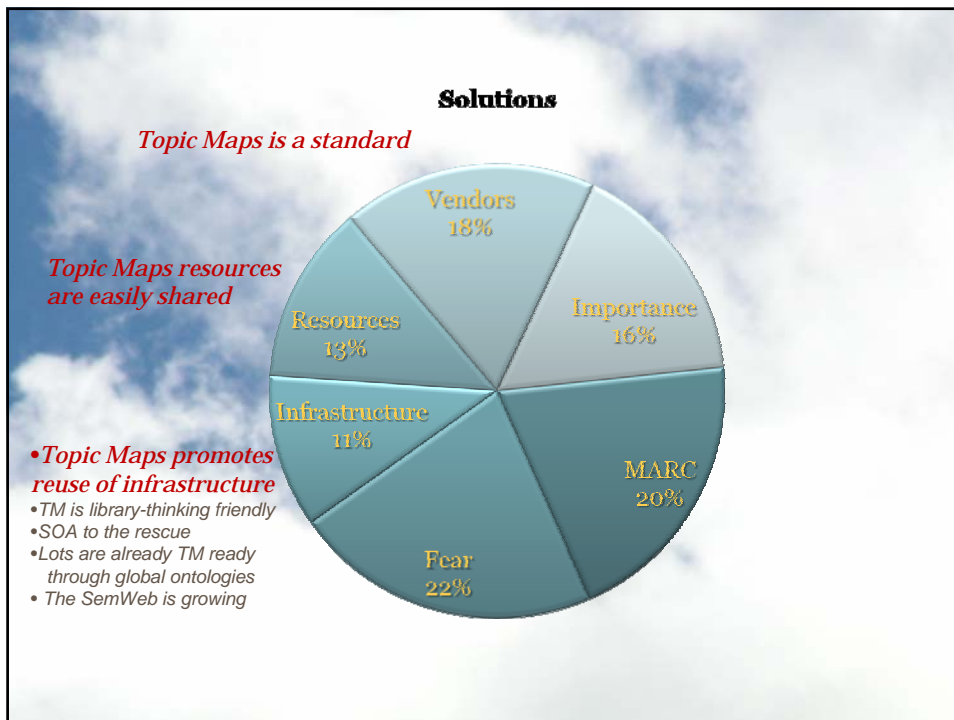
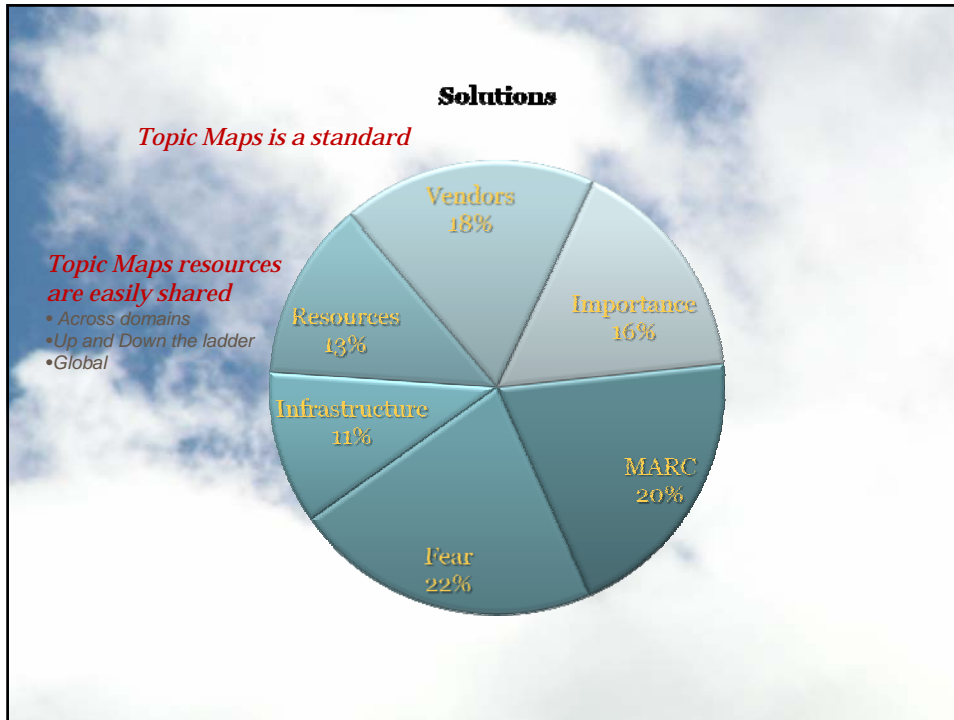


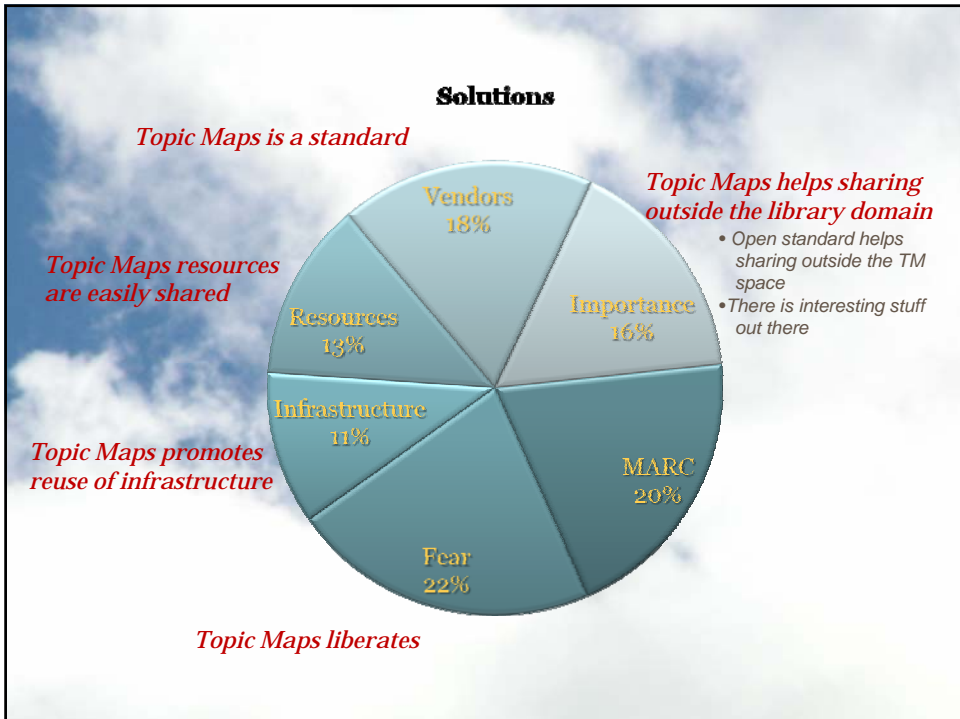
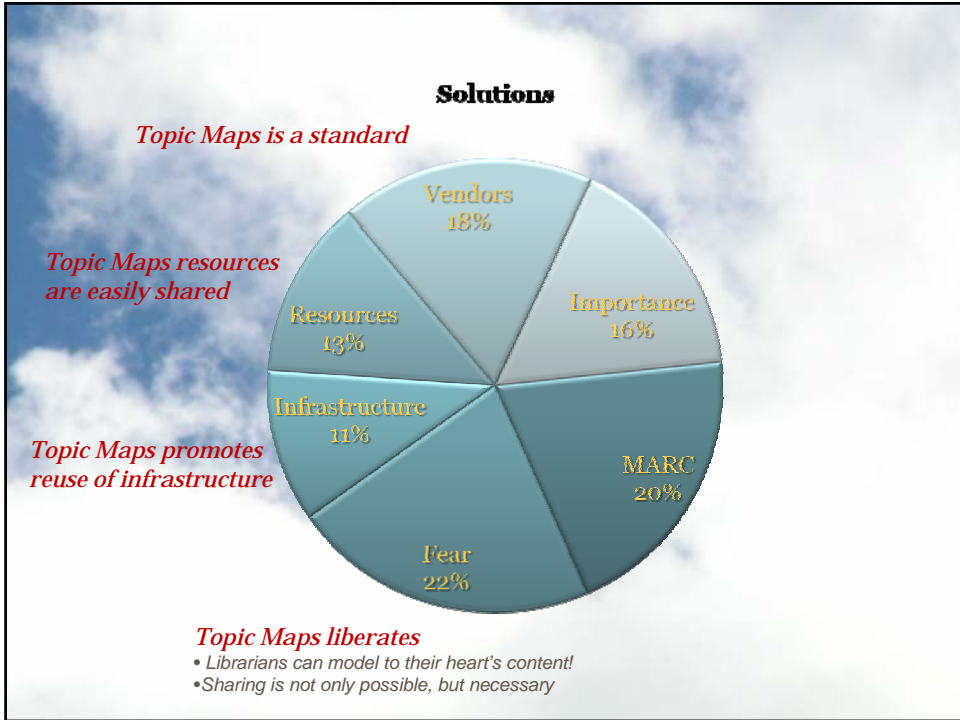
## Solutions

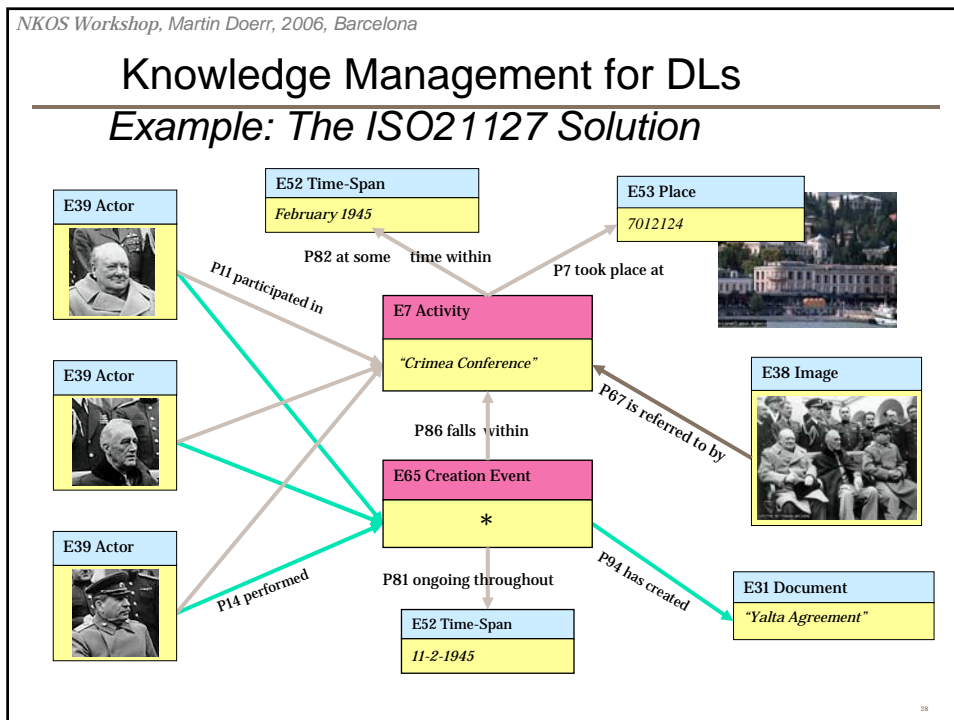
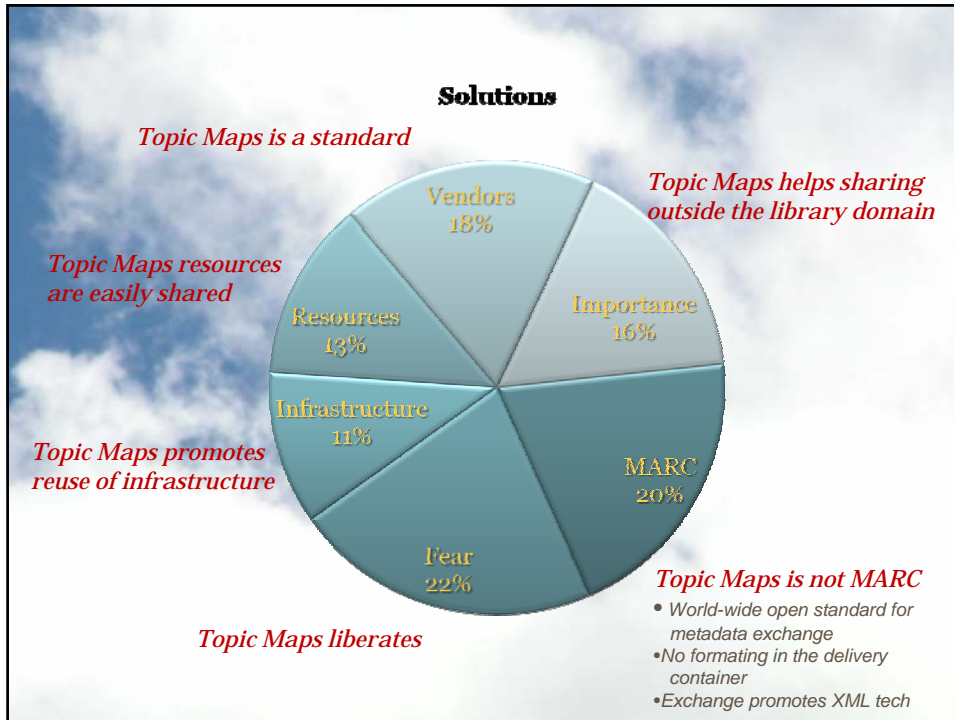
### *Topic Maps is a standard*

- Global identity
- Systems designed with change
- Librarians can extend the models







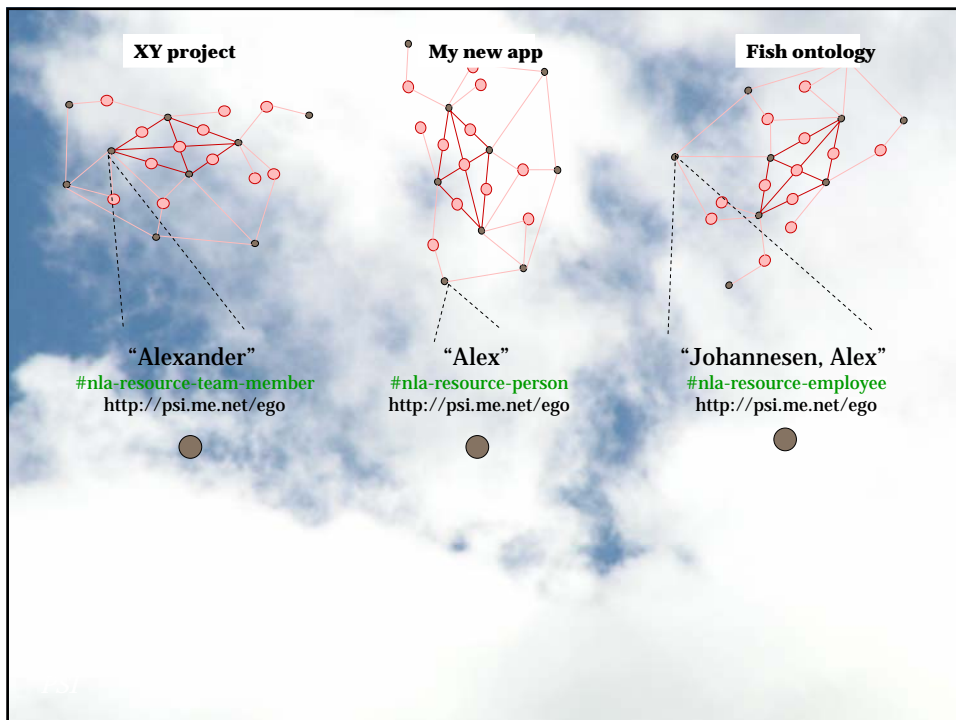
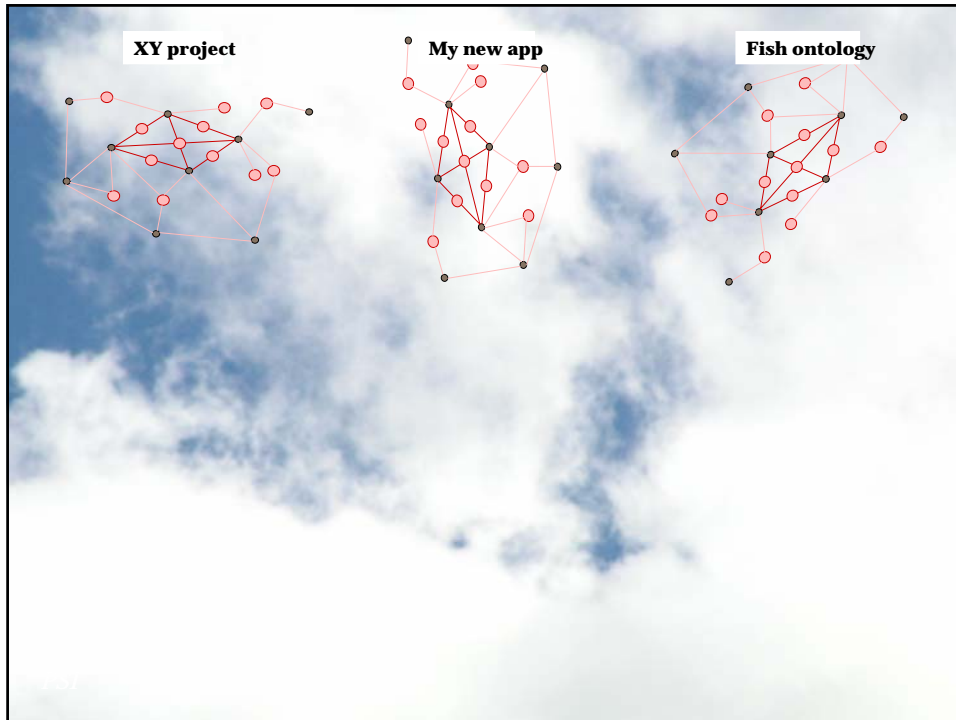


- 
- Libraries want to do many things, but what should they do?
    - Don't meddle in things. You need to jump!
  - IT performance
    - Lots of prototypes, seldom on the big issues, few implementations, half baked, often one offs (signed off)
    - "Not invented here" is what forces organisations to reinvent whatever wheel they think they need, regardless of it existing somewhere else.
  - Solving the big issues
    - To solve big problems, you need smart people and balls of steel
    - You're still smart people

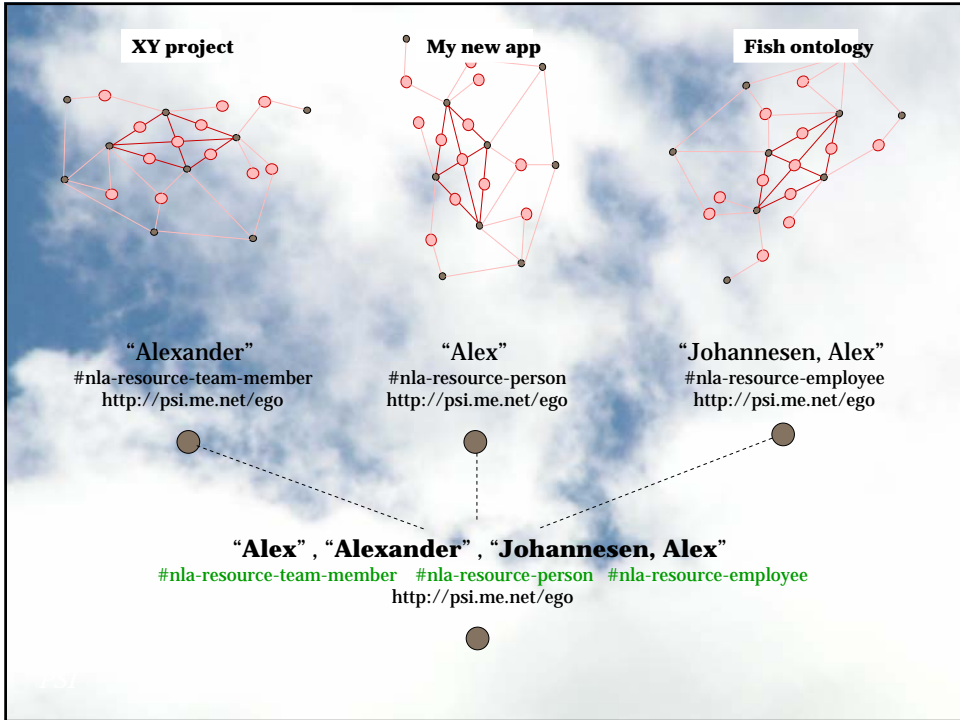
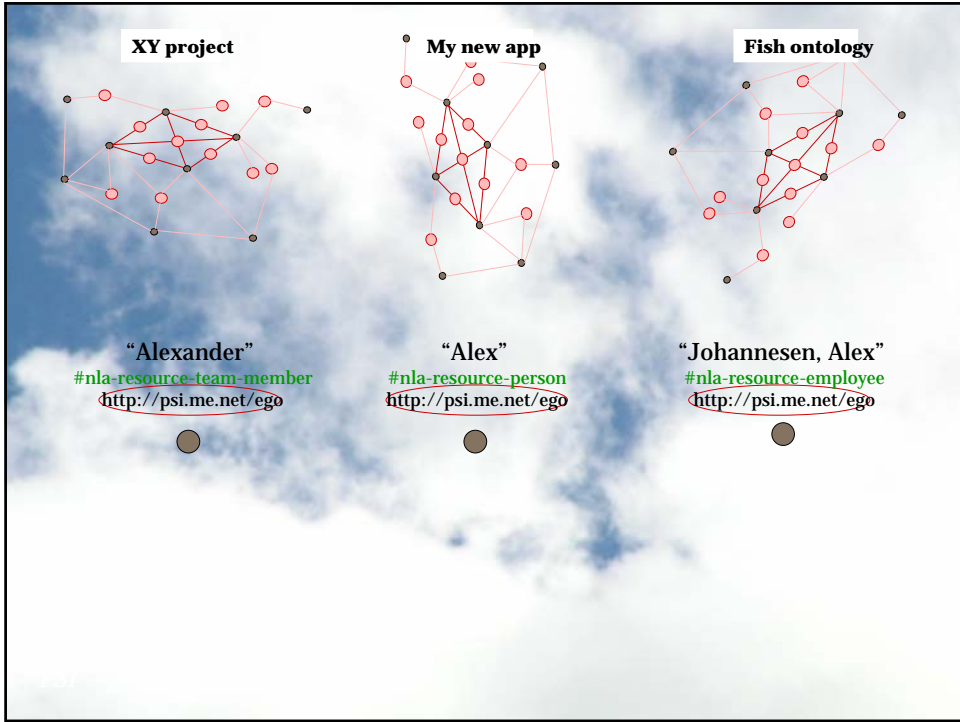


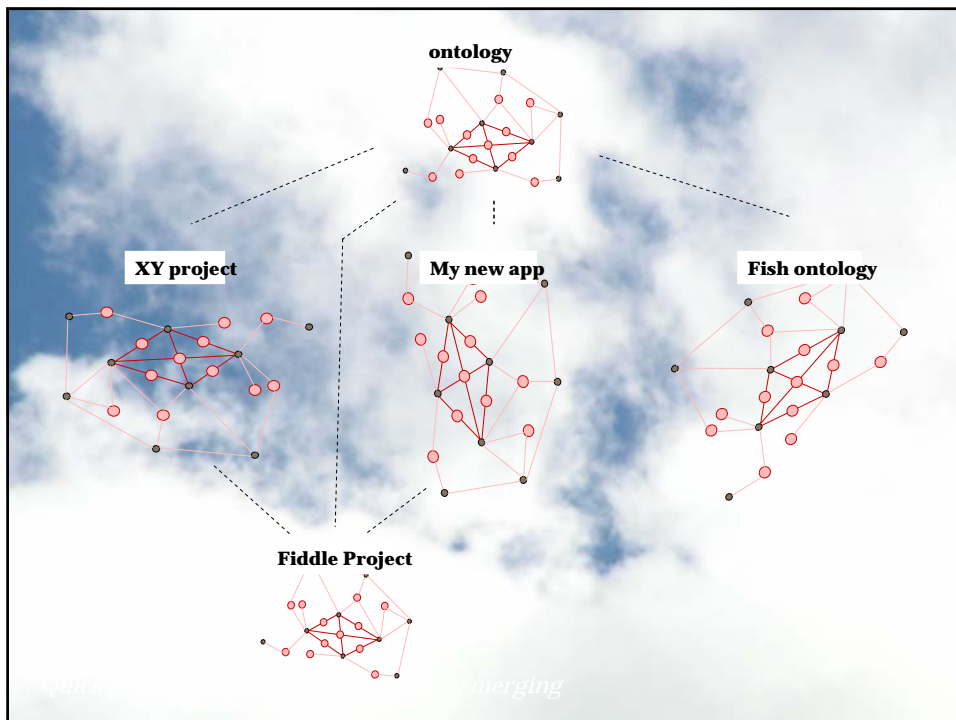
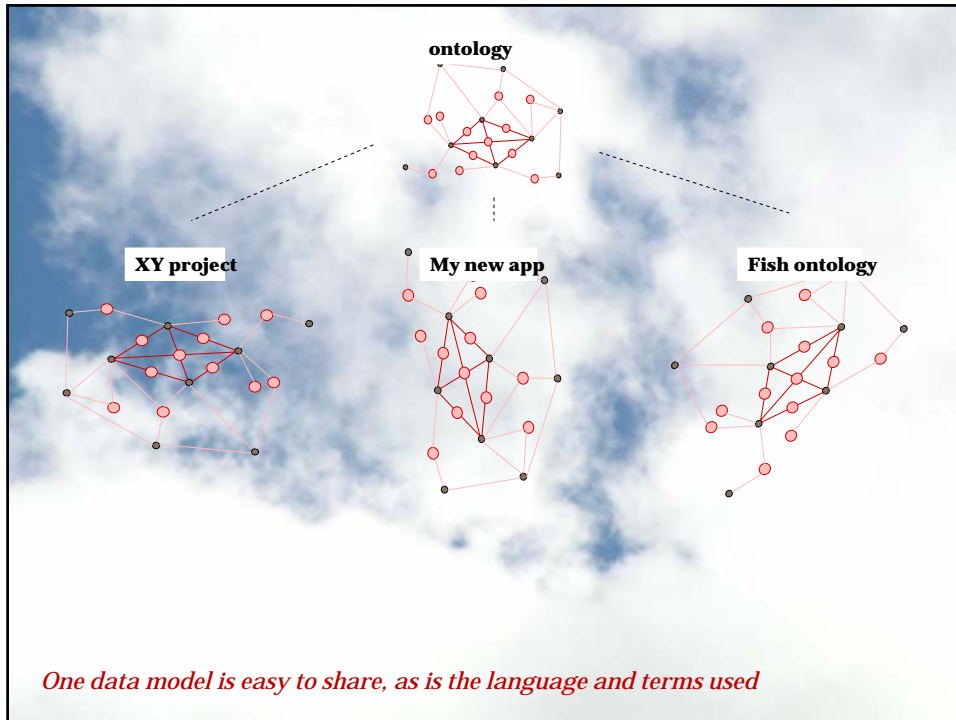
*Persistent identifiers*  
*and*  
*and merging*

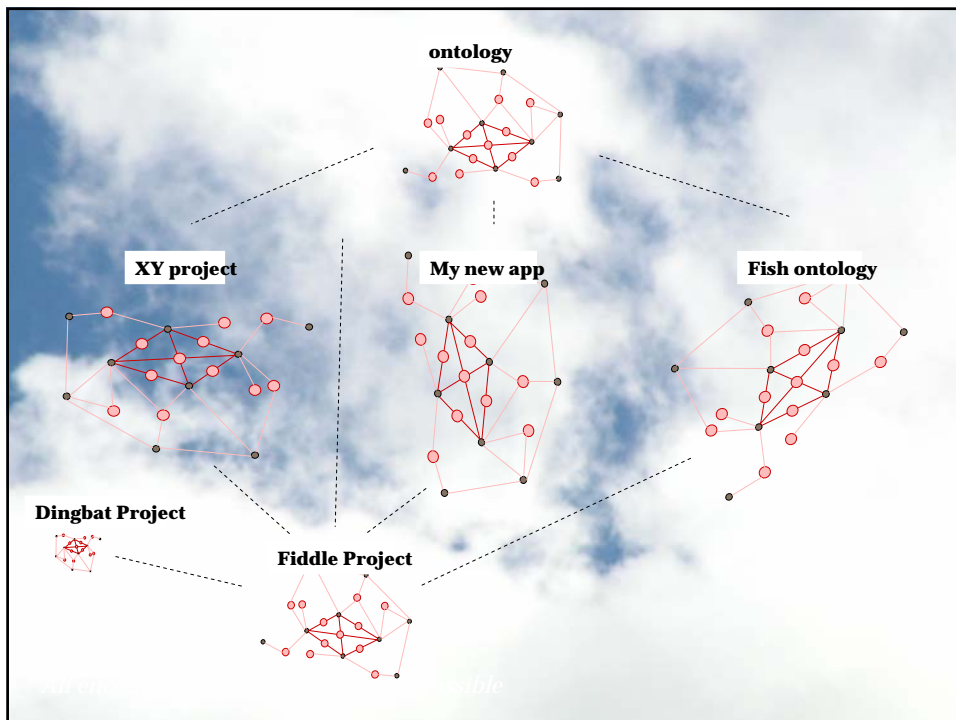
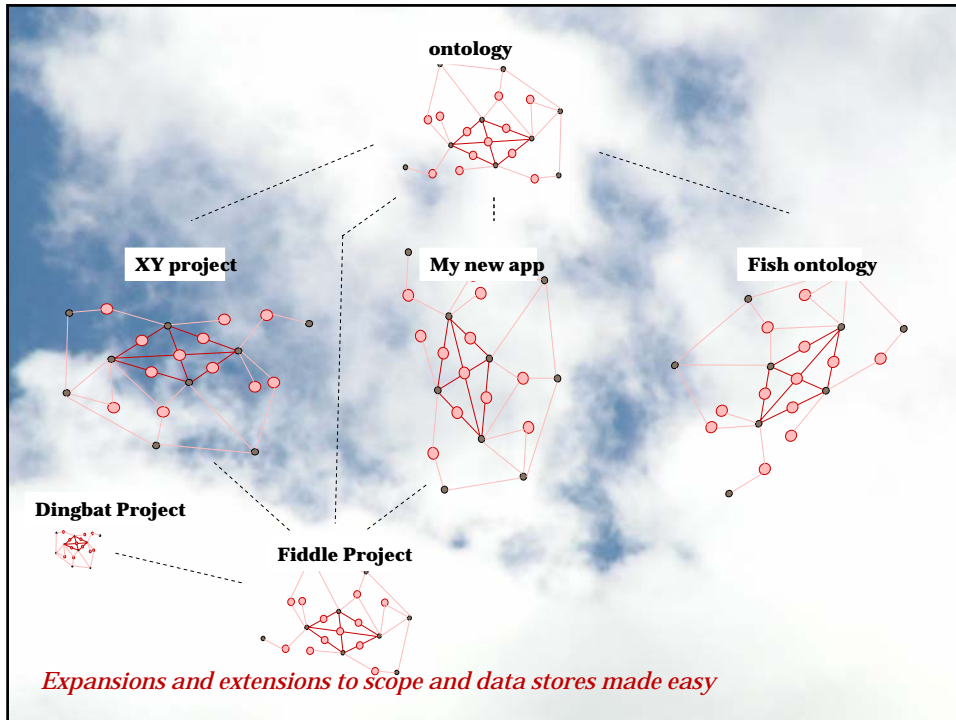
Public Subject Indicators (PSI)

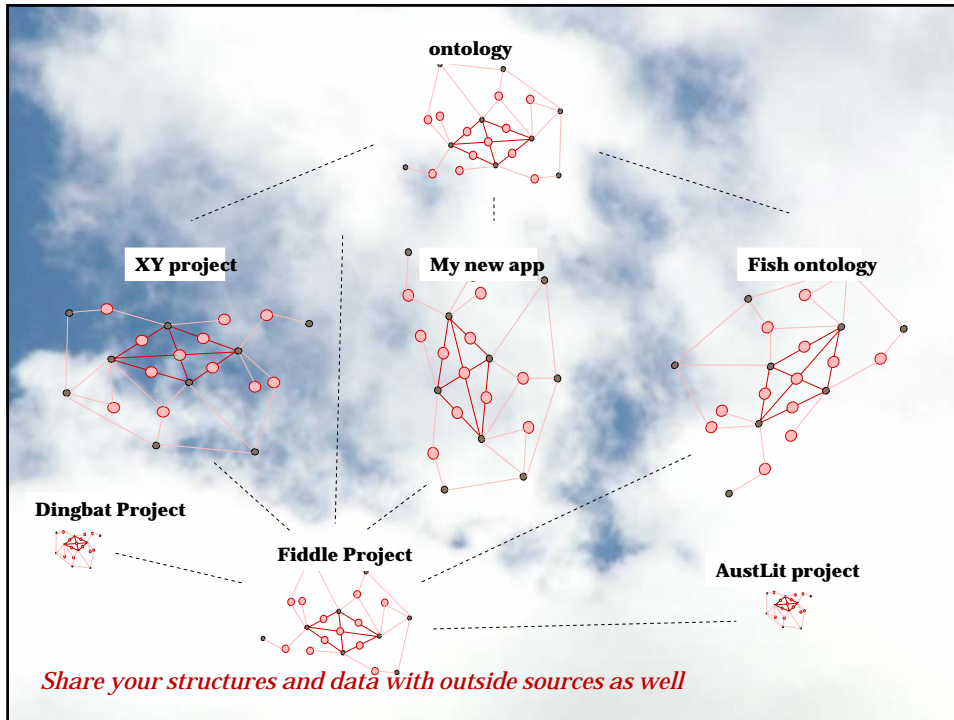












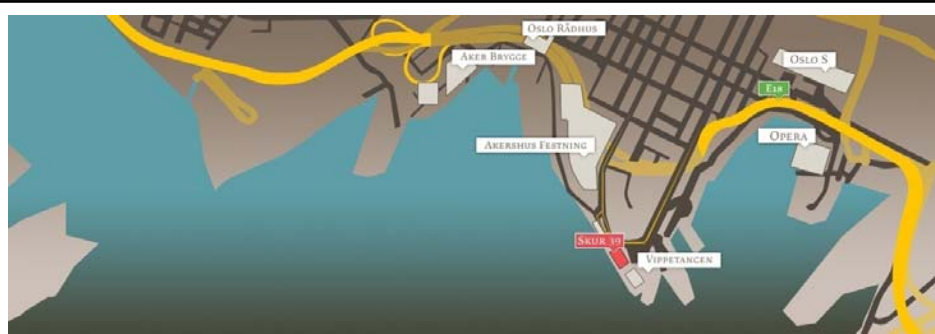
- a generic, subject-centric, associative data model;
- a technology with pluggable ontology work (FRBR in a breeze);
- a means and a technology to deal with serious identity control (sharing persistent identities solved);
- tools for semantic mapping of collections (focusing on relationships rather than untyped values);
- built-in merging and sharing of rich metadata (bringing our collection metadata out of black boxes for more diverse systems);
- context-dependent scoping of said metadata (viewpoints, source control, authorizing, security);
- shared global authority control (finally a model for this!);
- integrated thesaurus and other classification schemes (including automatic mapping between LCSH and Dewey, for example);
- communities and people (including academic circles and the open-source movement) to help with adaption and implementation;
- and last but not least, systems based on open international standards that preserve for future generations the knowledge we ourselves put into our work.



Topic Maps

already support

your crazy ideas



## BEKK

**Alexander Johannesen**  
Manager  
+47 982 19 378  
Alexander.johannesen@bekk.no

BEKK CONSULTING AS  
SKUR 39, VIPPETANGEN, P.O. BOX 134 SENTRUM, 0102 OSLO, NORWAY. WWW.BEKK.NO